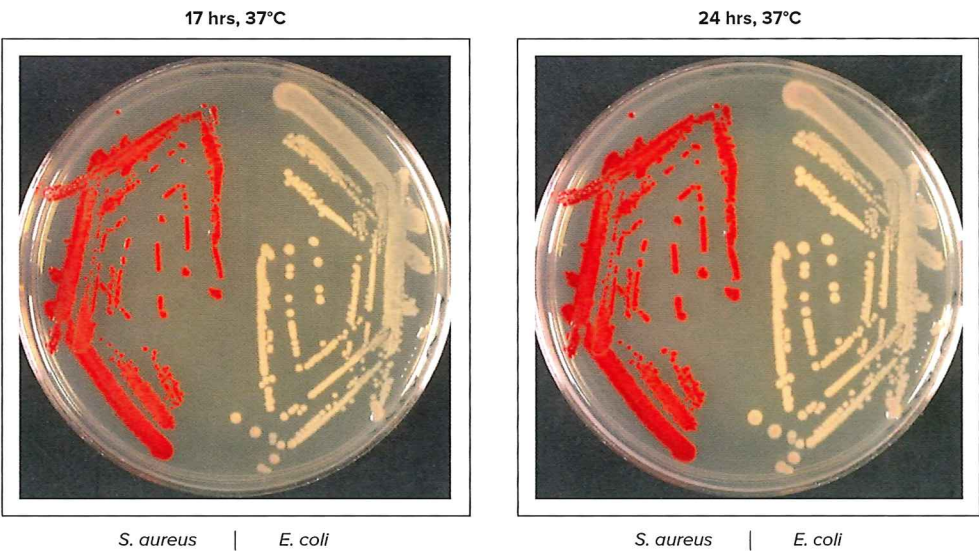


Rapid and clear detection of *Staphylococcus aureus*/MRSA

Test strains:
Staphylococcus aureus (MSSA) ATCC 29213
Escherichia coli ATCC 25922

Cultural Response Test
Nutrient Agar, 0.2 mM Aldol® 515 Phosphate



- rapid color development
- bright red coloration

Aldol® 515 Phosphate is superior to conventional indoxyl substrates

Test strains:
Staphylococcus aureus (MSSA) ATCC 29213
Escherichia coli ATCC 25922

Cultural Response Test
A cell suspension mix of *S. aureus* and *E. coli* was plated on Nutrient Agar with 0.2 mM of each chromogenic substrate, incubation temperature 37°C

